

90 MA 100 549
 11/11/23
 22.5.92

75%
 2/2/23

Forwarded to Govt.
 MRB panel meeting 22.5.92

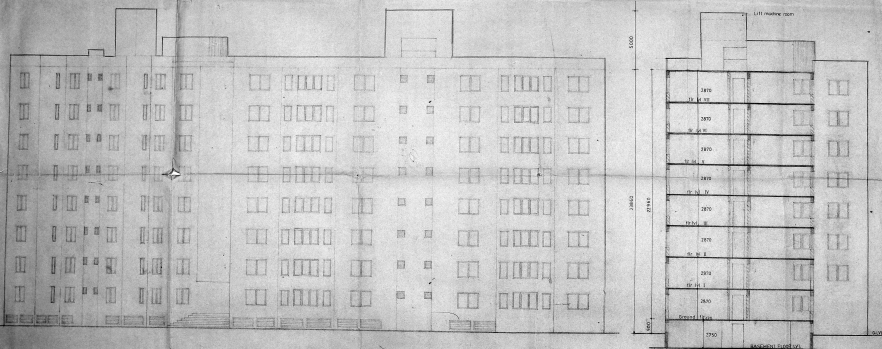
Planning Panel No. 10
APPROVED
 Subject to the conditions in this notice
 1. 100% coverage
 2. 100% coverage
 3. 100% coverage
 4. 100% coverage
 5. 100% coverage
 6. 100% coverage
 7. 100% coverage
 8. 100% coverage
 9. 100% coverage
 10. 100% coverage
 11. 100% coverage
 12. 100% coverage
 13. 100% coverage
 14. 100% coverage
 15. 100% coverage
 16. 100% coverage
 17. 100% coverage
 18. 100% coverage
 19. 100% coverage
 20. 100% coverage
 21. 100% coverage
 22. 100% coverage
 23. 100% coverage
 24. 100% coverage
 25. 100% coverage
 26. 100% coverage
 27. 100% coverage
 28. 100% coverage
 29. 100% coverage
 30. 100% coverage
 31. 100% coverage
 32. 100% coverage
 33. 100% coverage
 34. 100% coverage
 35. 100% coverage
 36. 100% coverage
 37. 100% coverage
 38. 100% coverage
 39. 100% coverage
 40. 100% coverage
 41. 100% coverage
 42. 100% coverage
 43. 100% coverage
 44. 100% coverage
 45. 100% coverage
 46. 100% coverage
 47. 100% coverage
 48. 100% coverage
 49. 100% coverage
 50. 100% coverage
 51. 100% coverage
 52. 100% coverage
 53. 100% coverage
 54. 100% coverage
 55. 100% coverage
 56. 100% coverage
 57. 100% coverage
 58. 100% coverage
 59. 100% coverage
 60. 100% coverage
 61. 100% coverage
 62. 100% coverage
 63. 100% coverage
 64. 100% coverage
 65. 100% coverage
 66. 100% coverage
 67. 100% coverage
 68. 100% coverage
 69. 100% coverage
 70. 100% coverage
 71. 100% coverage
 72. 100% coverage
 73. 100% coverage
 74. 100% coverage
 75. 100% coverage
 76. 100% coverage
 77. 100% coverage
 78. 100% coverage
 79. 100% coverage
 80. 100% coverage
 81. 100% coverage
 82. 100% coverage
 83. 100% coverage
 84. 100% coverage
 85. 100% coverage
 86. 100% coverage
 87. 100% coverage
 88. 100% coverage
 89. 100% coverage
 90. 100% coverage
 91. 100% coverage
 92. 100% coverage
 93. 100% coverage
 94. 100% coverage
 95. 100% coverage
 96. 100% coverage
 97. 100% coverage
 98. 100% coverage
 99. 100% coverage
 100. 100% coverage

MMDA C/PP No. 1
 C/N: 42/274/4
 App: _____
 Scribe: _____
 Part I: _____
 Part II: _____
 Date: _____

PROPOSED
 RESIDENTIAL FLATS
 AT RS NO 4274/4,
 GREENWAYS ROAD
 R.A.PURAM MADRAS-28

ELEVATION & SECTION

SCALE	DATE	DRAWN	SHEET NO.
1:50	10.1.92		5



EAST ELEVATION (ROADSIDE)

SECTION A-A

NOTE
 ALL DIMENSIONS ARE IN MM
 DR. S. SETHUPATHI
 ARCHITECT AND PLANNER
 10, KALYANDHAR, 42, 43, 44, 45, 46, 47, 48, 49, 50, 51, 52, 53, 54, 55, 56, 57, 58, 59, 60, 61, 62, 63, 64, 65, 66, 67, 68, 69, 70, 71, 72, 73, 74, 75, 76, 77, 78, 79, 80, 81, 82, 83, 84, 85, 86, 87, 88, 89, 90, 91, 92, 93, 94, 95, 96, 97, 98, 99, 100, 101, 102, 103, 104, 105, 106, 107, 108, 109, 110, 111, 112, 113, 114, 115, 116, 117, 118, 119, 120, 121, 122, 123, 124, 125, 126, 127, 128, 129, 130, 131, 132, 133, 134, 135, 136, 137, 138, 139, 140, 141, 142, 143, 144, 145, 146, 147, 148, 149, 150, 151, 152, 153, 154, 155, 156, 157, 158, 159, 160, 161, 162, 163, 164, 165, 166, 167, 168, 169, 170, 171, 172, 173, 174, 175, 176, 177, 178, 179, 180, 181, 182, 183, 184, 185, 186, 187, 188, 189, 190, 191, 192, 193, 194, 195, 196, 197, 198, 199, 200, 201, 202, 203, 204, 205, 206, 207, 208, 209, 210, 211, 212, 213, 214, 215, 216, 217, 218, 219, 220, 221, 222, 223, 224, 225, 226, 227, 228, 229, 230, 231, 232, 233, 234, 235, 236, 237, 238, 239, 240, 241, 242, 243, 244, 245, 246, 247, 248, 249, 250, 251, 252, 253, 254, 255, 256, 257, 258, 259, 260, 261, 262, 263, 264, 265, 266, 267, 268, 269, 270, 271, 272, 273, 274, 275, 276, 277, 278, 279, 280, 281, 282, 283, 284, 285, 286, 287, 288, 289, 290, 291, 292, 293, 294, 295, 296, 297, 298, 299, 300, 301, 302, 303, 304, 305, 306, 307, 308, 309, 310, 311, 312, 313, 314, 315, 316, 317, 318, 319, 320, 321, 322, 323, 324, 325, 326, 327, 328, 329, 330, 331, 332, 333, 334, 335, 336, 337, 338, 339, 340, 341, 342, 343, 344, 345, 346, 347, 348, 349, 350, 351, 352, 353, 354, 355, 356, 357, 358, 359, 360, 361, 362, 363, 364, 365, 366, 367, 368, 369, 370, 371, 372, 373, 374, 375, 376, 377, 378, 379, 380, 381, 382, 383, 384, 385, 386, 387, 388, 389, 390, 391, 392, 393, 394, 395, 396, 397, 398, 399, 400, 401, 402, 403, 404, 405, 406, 407, 408, 409, 410, 411, 412, 413, 414, 415, 416, 417, 418, 419, 420, 421, 422, 423, 424, 425, 426, 427, 428, 429, 430, 431, 432, 433, 434, 435, 436, 437, 438, 439, 440, 441, 442, 443, 444, 445, 446, 447, 448, 449, 450, 451, 452, 453, 454, 455, 456, 457, 458, 459, 460, 461, 462, 463, 464, 465, 466, 467, 468, 469, 470, 471, 472, 473, 474, 475, 476, 477, 478, 479, 480, 481, 482, 483, 484, 485, 486, 487, 488, 489, 490, 491, 492, 493, 494, 495, 496, 497, 498, 499, 500, 501, 502, 503, 504, 505, 506, 507, 508, 509, 510, 511, 512, 513, 514, 515, 516, 517, 518, 519, 520, 521, 522, 523, 524, 525, 526, 527, 528, 529, 530, 531, 532, 533, 534, 535, 536, 537, 538, 539, 540, 541, 542, 543, 544, 545, 546, 547, 548, 549, 550, 551, 552, 553, 554, 555, 556, 557, 558, 559, 560, 561, 562, 563, 564, 565, 566, 567, 568, 569, 570, 571, 572, 573, 574, 575, 576, 577, 578, 579, 580, 581, 582, 583, 584, 585, 586, 587, 588, 589, 590, 591, 592, 593, 594, 595, 596, 597, 598, 599, 600, 601, 602, 603, 604, 605, 606, 607, 608, 609, 610, 611, 612, 613, 614, 615, 616, 617, 618, 619, 620, 621, 622, 623, 624, 625, 626, 627, 628, 629, 630, 631, 632, 633, 634, 635, 636, 637, 638, 639, 640, 641, 642, 643, 644, 645, 646, 647, 648, 649, 650, 651, 652, 653, 654, 655, 656, 657, 658, 659, 660, 661, 662, 663, 664, 665, 666, 667, 668, 669, 670, 671, 672, 673, 674, 675, 676, 677, 678, 679, 680, 681, 682, 683, 684, 685, 686, 687, 688, 689, 690, 691, 692, 693, 694, 695, 696, 697, 698, 699, 700, 701, 702, 703, 704, 705, 706, 707, 708, 709, 710, 711, 712, 713, 714, 715, 716, 717, 718, 719, 720, 721, 722, 723, 724, 725, 726, 727, 728, 729, 730, 731, 732, 733, 734, 735, 736, 737, 738, 739, 740, 741, 742, 743, 744, 745, 746, 747, 748, 749, 750, 751, 752, 753, 754, 755, 756, 757, 758, 759, 760, 761, 762, 763, 764, 765, 766, 767, 768, 769, 770, 771, 772, 773, 774, 775, 776, 777, 778, 779, 780, 781, 782, 783, 784, 785, 786, 787, 788, 789, 790, 791, 792, 793, 794, 795, 796, 797, 798, 799, 800, 801, 802, 803, 804, 805, 806, 807, 808, 809, 810, 811, 812, 813, 814, 815, 816, 817, 818, 819, 820, 821, 822, 823, 824, 825, 826, 827, 828, 829, 830, 831, 832, 833, 834, 835, 836, 837, 838, 839, 840, 841, 842, 843, 844, 845, 846, 847, 848, 849, 850, 851, 852, 853, 854, 855, 856, 857, 858, 859, 860, 861, 862, 863, 864, 865, 866, 867, 868, 869, 870, 871, 872, 873, 874, 875, 876, 877, 878, 879, 880, 881, 882, 883, 884, 885, 886, 887, 888, 889, 890, 891, 892, 893, 894, 895, 896, 897, 898, 899, 900, 901, 902, 903, 904, 905, 906, 907, 908, 909, 910, 911, 912, 913, 914, 915, 916, 917, 918, 919, 920, 921, 922, 923, 924, 925, 926, 927, 928, 929, 930, 931, 932, 933, 934, 935, 936, 937, 938, 939, 940, 941, 942, 943, 944, 945, 946, 947, 948, 949, 950, 951, 952, 953, 954, 955, 956, 957, 958, 959, 960, 961, 962, 963, 964, 965, 966, 967, 968, 969, 970, 971, 972, 973, 974, 975, 976, 977, 978, 979, 980, 981, 982, 983, 984, 985, 986, 987, 988, 989, 990, 991, 992, 993, 994, 995, 996, 997, 998, 999, 1000

A N SENGUPTA
 ARCHITECT AND PLANNER
 PIV ENGINEERING STUDY CENTRE
 GREENWAYS ROAD, MADRAS 600 028

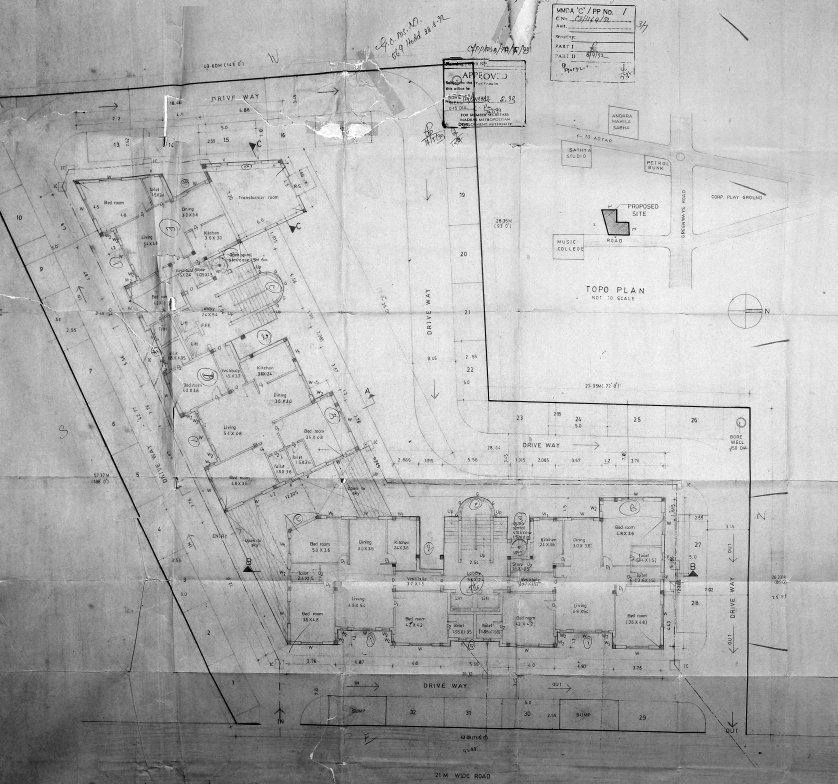
OWNERS
 1. M. S. Senthupathi
 2. M. S. Senthupathi
 3. M. S. Senthupathi

PROPOSED RESIDENTIAL
FLATS R.S.NO: 4274/4
GREENWAYS ROAD
R A PURAM
MADRAS 600 028

APPROVED FOR THE
MADRAS CITY CORPORATION
R.S. NO. 4274/4
PART I
PLAN OF BUILDING

C.A.M.A. NO. 69 dated 28.8.78

APPROVED FOR THE
MADRAS CITY CORPORATION
R.S. NO. 4274/4
PART I
PLAN OF BUILDING



SITE PLAN AND GROUND FLOOR PLAN

SCALE	DATE	DESK	THROW UP
1:100	10.02.78	SRINIVASAN	2

AREA STATEMENT

PLOT AREA: 2238.46 Sq. M.
FLOOR SHADE AREA: 2.5
ALLOWABLE BUILDING COVER: 642.89 Sq. M.
GROSS FLOOR AREA: 552.35 Sq. M.
ALLOWABLE GROSS FLOOR AREA: 552.35 Sq. M.

PROPOSED

GROUND FLOOR AREA: 552.35 Sq. M.
TOTAL FLOOR AREA: 1842.00 Sq. M.
(GROUND FLOOR): 552.35 Sq. M.
A. AREA OF THE SUPER STRUCTURE: 1842.00 Sq. M.
B. AREA OF THE GROUND AREA: 552.35 Sq. M.
PROPOSED GROUND COVER: 28.85 %
PROPOSED P.F. : 7.31

KEY
P.F. - Fire fighting reservoir
LC - Firewater channel

SCHEDULE OF JOINERY

SNO	TYPE	DESCRIPTION	MEASURE	REMARKS
1	D	DOOR	10	210
2	D	DOOR	9	110
3	D	DOOR	2.5	270
4	W	WINDOW	1.4	170
5	W	WINDOW	2.4	200
6	W	WINDOW	1.4	170
7	W	WINDOW	1.2	90
8	W	WINDOW	0.4	130
9	V	VERANDA	0.5	200
10	S	SCREEN	1.0	230
10	RS	ROLLING SHUTTER	1.8	210

LEGEND

PROPOSED BUILDING SHOWN AS
BOUNDARY LINE
SEWER LINE
WATER LINE
ROAD
E.C.C. Fire fighting equipment

NOTE: ALL THE DIMENSIONS ARE IN METRE

Handwritten notes:
C.A.M.A. NO. 69 dated 28.8.78
APPROVED FOR THE
MADRAS CITY CORPORATION
R.S. NO. 4274/4
PART I
PLAN OF BUILDING

BY: *(Signature)*
DATE: 10.02.78
SCALE: 1:100

A. N. SENGUPTA
REGISTERED ARCHITECT, M.C.A. R.A.I.C.
ARCHITECT AND PLANNER
P.O. ENGINEERING, VIJAY VASTHIS,
SANTHOSHAPURAM ROAD,
MADRAS 600 028

OWNERS
(Signature)

9.8.74 to 23/9
 Mad 10 28/8/74

Approved by Govt
 18 Jan 1975 22.0.74

VUDA C/100 No 1
 C.No. 28/14/74
 Area 1000 sq. ft.
 Part I 1000
 Part II
 Part III
 Part IV
 Part V

APPROVED
 23/9/74
 525

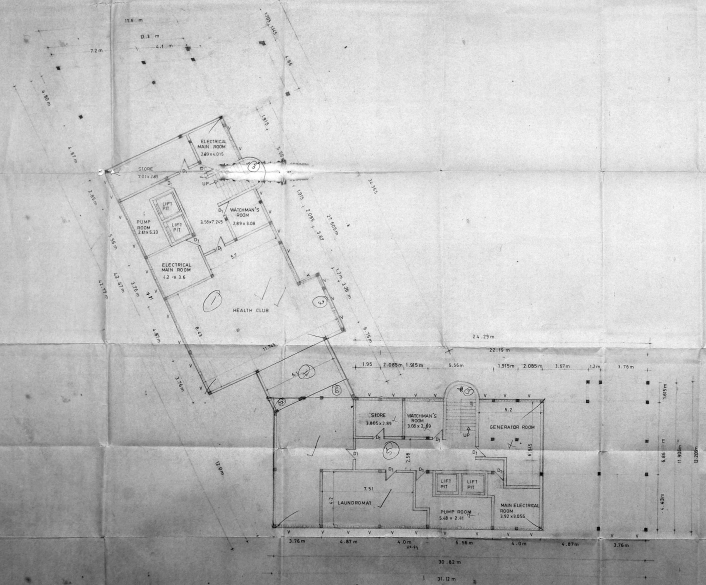
55

PROPOSED RESIDENTIAL
 FLATS AT R.S.NO.4274/4,
 GREENWAYS ROAD,
 R. A. PURAM, MADRAS-28

BASEMENT FLOOR PLAN

SCALE	DATE	DEALT	SHEET NO
1:100	10.1.82		1

BASEMENT FLOOR AREA 108 SQ



M. S. SENGUPTA
 M. S. SENGUPTA & PARTNERS
 CIVIL ENGINEERS
 10, GREENWAYS ROAD, R. A. PURAM, MADRAS-28

A. N. SENGUPTA
 M. S. SENGUPTA & PARTNERS
 CIVIL ENGINEERS
 10, GREENWAYS ROAD, R. A. PURAM, MADRAS-28

ARCHT. AND PLUMBERS
 P. J. SENGUPTA & PARTNERS
 CIVIL ENGINEERS
 10, GREENWAYS ROAD, R. A. PURAM, MADRAS-28

